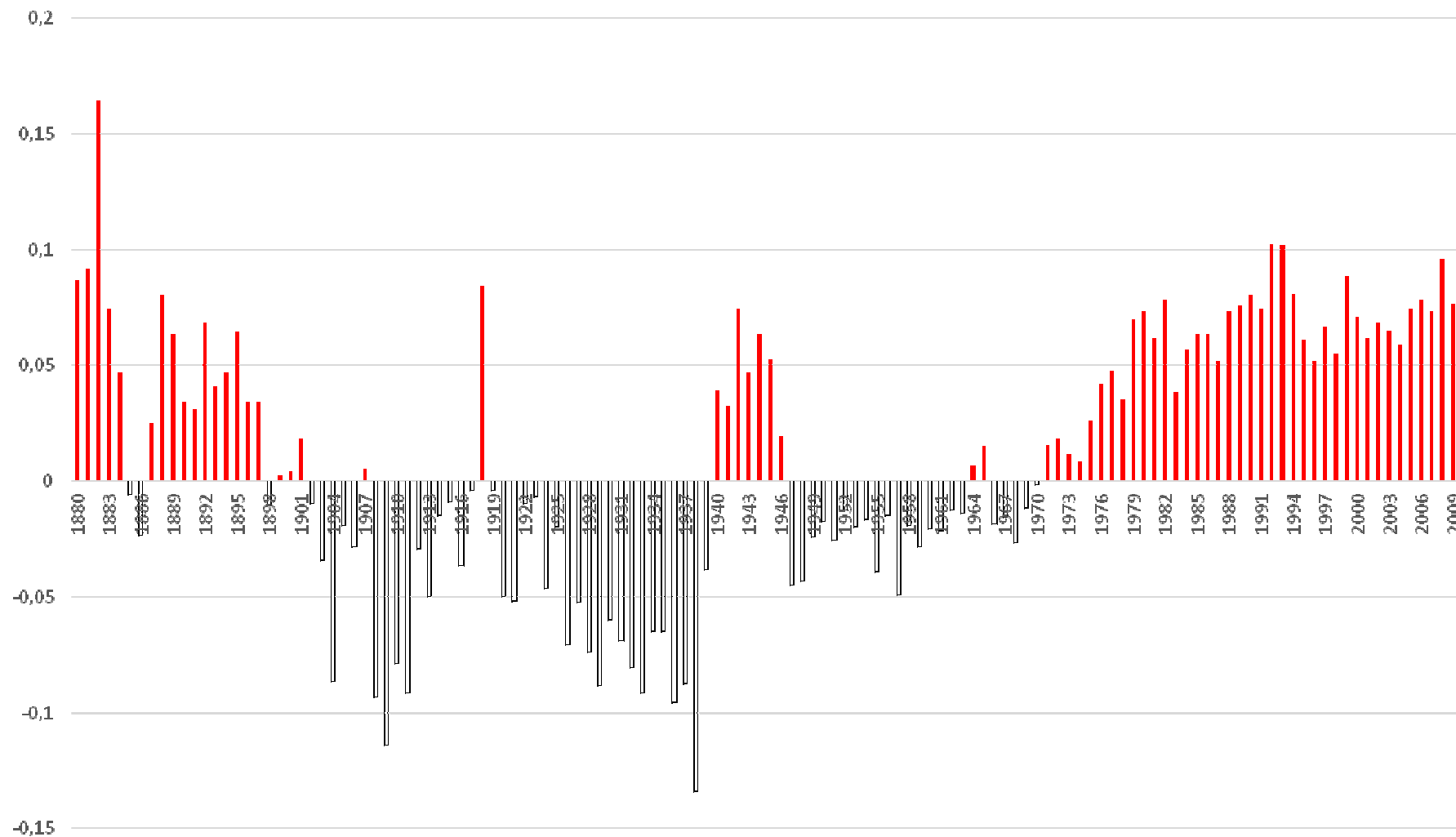


# GISS Vergleich der 2012 und 2017 Version

**NASA trick: cool the past & warm the present to show strong "anthropogenic warming"**  
Changes in °C made to the 2012 version of GISS Temperature compared to the 2017 version



*Figure 1: comparison between GISS versions of the 04.01.2012 and 09.05.2017 ; old data restored with the „waybackmachine“*

**NASA trick: cool the past & warm the present to show strong "anthropogenic warming"**  
Global annual mean temperature [°C] of the GISS-2012 version and GISS-2017 version

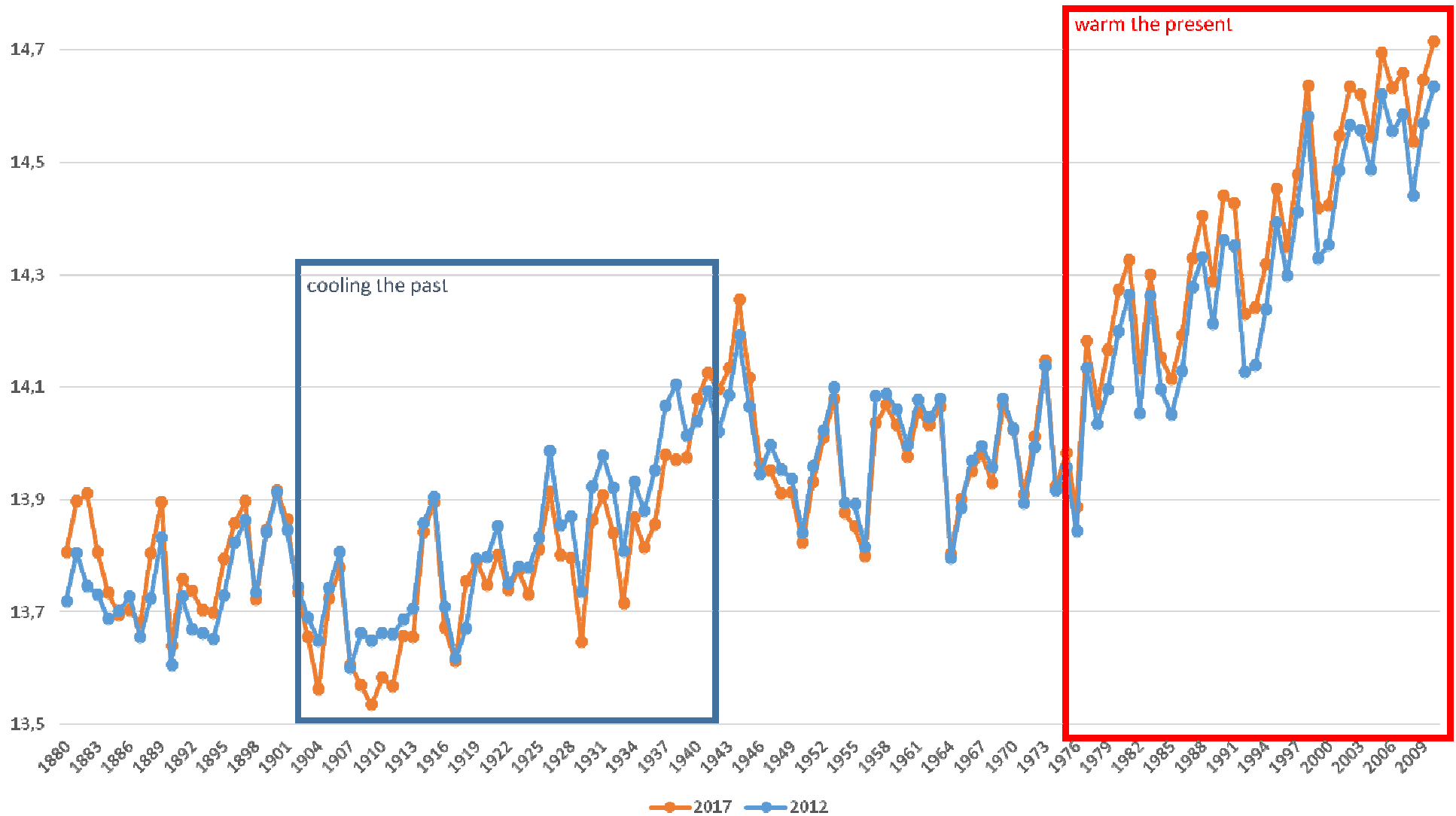


Figure 2: Comparison of annual mean global temperatures [°C] of the GISS versions of the 04.01.2012 and 09.05.2017; old data restored with the „waybackmachine“

**NASA trick: cool the past & warm the present to show strong "anthropogenic warming"**  
5year-running mean global temperature [°C] of the GISS-2012 version and GISS-2017 version

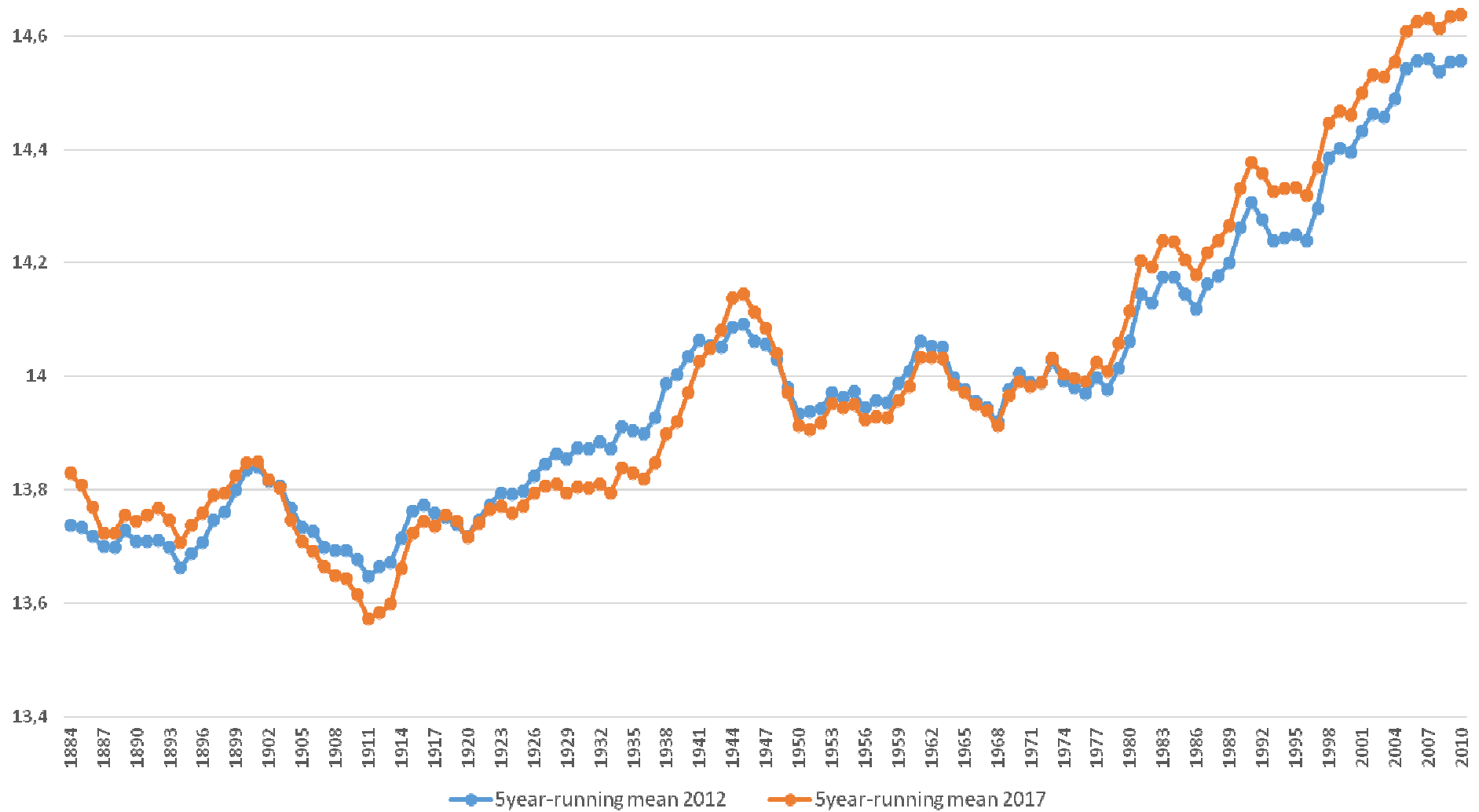


Figure 3: Comparison of the 5year-running mean global temperature [°C] of the GISS versions of the 04.01.2012 and 09.05.2017; old data restored with the „waybackmachine“

## NASA trick: cool the past & warm the present to show strong "anthropogenic warming"

10year-running mean global temperature [°C] of the GISS-2012 version and GISS-2017 version

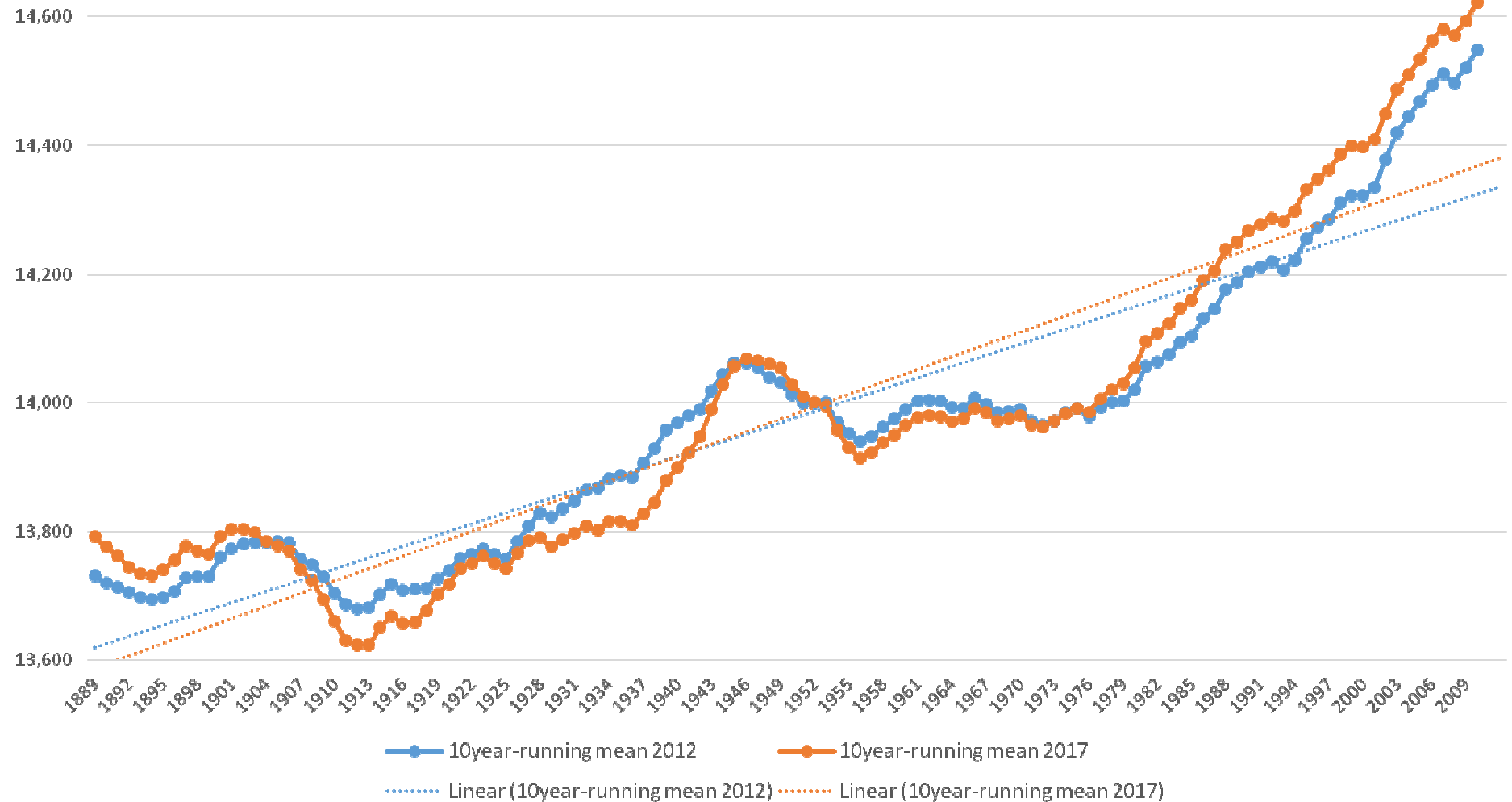


Figure 4: Comparison of the 10year-running mean global temperature [°C] of the GISS versions of the 04.01.2012 and 09.05.2017; old data restored with the „waybackmachine“